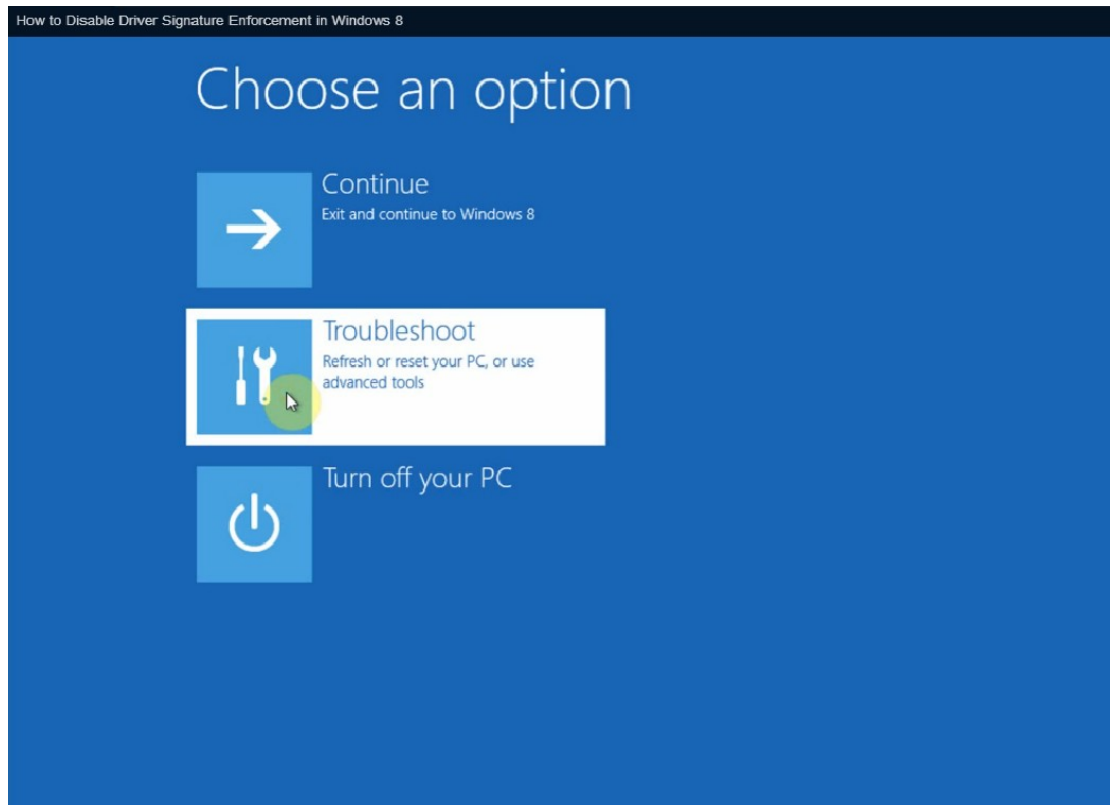


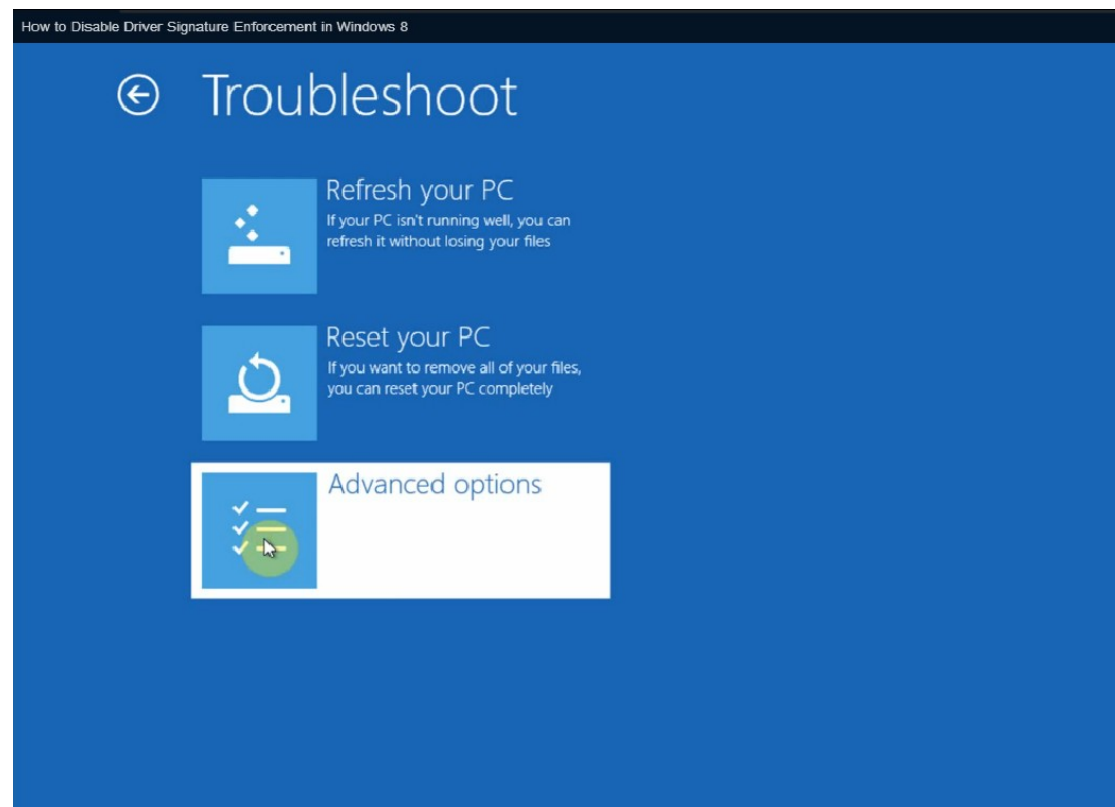
Windows 8 Disable Driver Signature Enforcement

1. Double click on W8OpenOptions.cmd to enter advanced options

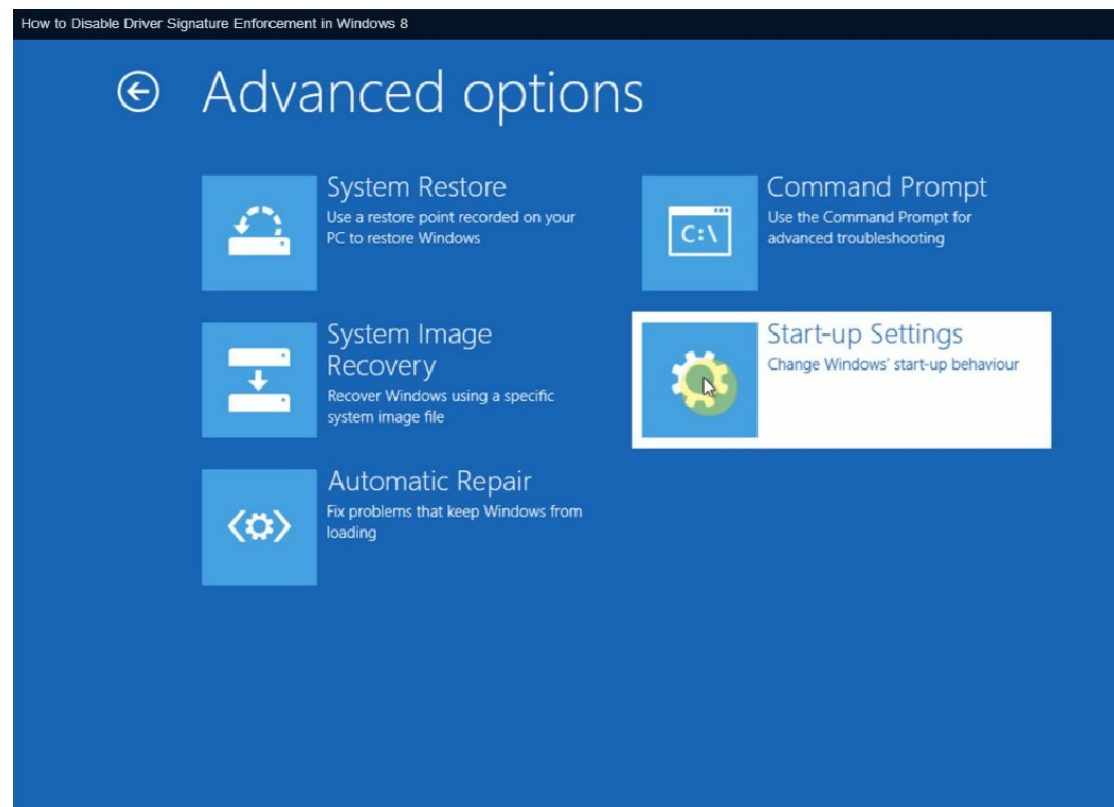
2. Select Troubleshoot



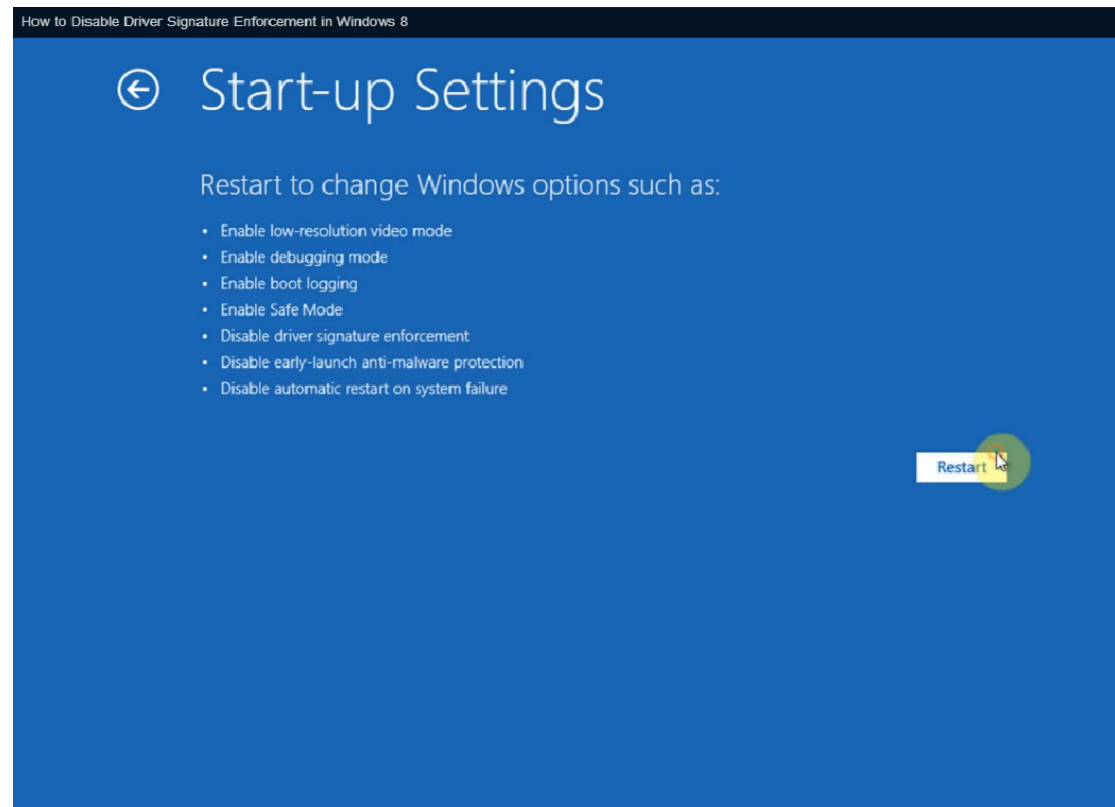
3. Select Advanced options



4. Select Start-up Settings



5. Confirm restart.



6. Press **F7** to disable driver signature enforcement, then press **ENTER** to reboot.

How to Disable Driver Signature Enforcement in Windows 8

Startup Settings

Press a number to choose from the options below:

Use number keys or functions keys F1-F9.

- 1) Enable debugging
- 2) Enable boot logging
- 3) Enable low-resolution video
- 4) Enable Safe Mode
- 5) Enable Safe Mode with Networking
- 6) Enable Safe Mode with Command Prompt
- 7) Disable driver signature enforcement
- 8) Disable early launch anti-malware protection
- 9) Disable automatic restart after failure

Press F10 for more options

Press Enter to return to your operating system